



Ref : 9617CCV

Beautiful 15th century manor house with its outbuildings and pond

Area LAUZERTE



Habitable : 282 m²



Usable : 665 m²



Land : 7,9 Ha

590 000 €

Manor-house for sale Tarn et Garonne. Charming 15th century manor house situated in the northwest of the Tarn et Garonne in the Quercy Blanc region and with a tower forming an enclosed courtyard and a stable. The whole with a pond surrounded by woods and meadows with a breathtaking view. This property is in excellent condition, the roofs have been redone, the exterior and interior walls joined. The architecture has been respected, the floors are in terracotta tiles, oak wood floors, high French ceilings and in all the rooms open period fireplaces plus a beautiful stone staircase. Some of the woodwork is double-glazed wood, the oil heating system feeds cast iron radiators. L-shaped building with its courtyard closed by stone walls. It is accessed through a porch raised by a tower, the house is built on cellars and raised on two levels.

IN SUMMARY

Rooms : 6
Bedrooms : 2
Bathrooms : 2

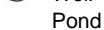
Swimming pool : no
Garage place : 2
Parking space : 2
Outbuildings : yes



Fuel



Well



Pond



Adsl

Advantages : Manor | Nice views

SERVICES



1st Shops : 5 mn



All shops : 5 mn



Health : 30 mn



Elementary : 5 mn

Middle School : 20 mn

High school : 30 mn



35 mn



45 mn



35 mn



75 mn

ENERGY INFORMATION

Consommation conventionnelle 171,00 kWh/m².an

Estimation des émissions 46,00 kg éqCO₂/m².an

Maisons & Chateaux

12 pl. A. de Solminihac - 46000 CAHORS

Tel +33 (0)5 65 35 63 32

contact@maisonsetchateaux.com



DESCRIPTION

Dwelling house : 280 m².

Ground floor :

Entrance giving onto a corridor : 19,53 m².

Living room / office : 43.31 m² with open fireplace

Dining room : 23.00 m² vaulted room with fireplace

Fitted kitchen : 50,13 m².

WC : 1,30 m².

Laundry room 4 m².

Staircase giving on a stone staircase : 24,70 m².

First floor :

Landing giving onto a corridor : 24,70 m².

Corridor with access to the communal areas: 28.35 m².

Room 1: 46.46 m

Bedroom 2: 32.14 m².

Bathroom : 10,61 m² : Italian shower, basins

WC : 1,63 m² with washbasin

Convertible attic space

Common adjoining to the house : 50,12 m².

Dovecote on three levels: 24.96 m².

Old bread oven converted into storage : 10 m².

Agricultural shed converted into horse stables : 250 m².

Covered well.

A nice park planted with trees compatible with the clayey limestone terrain. The whole in a wild and peaceful landscape overlooking the valley with a pond and open views over the meadows.

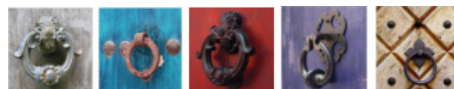
Are you interested ?



Marie

(+33) (0)5 65 35 63 32

contact@maisonsetchateaux.com



Maisons & Chateaux

12 pl. A. de Solminihac - 46000 CAHORS

Tel +33 (0)5 65 35 63 32

contact@maisonsetchateaux.com