



Ref : 9724MDB

Comfortable, recently built country house near Gourdon.

Area **Gourdon**



Habitable : 196 m²



Usable : 246 m²



Land : 1 Ha

295 000 €

Country house for sale Lot. Recently built, comfortable, bright and quiet country house with large living room, five bedrooms, swimming pool and outbuilding on 1 hectare of wooded grounds near Gourdon, a tourist town.

IN SUMMARY

Rooms : 7
Bedrooms : 5
Bathrooms : 2

Swimming pool : yes
Garage place : 1
Parking space : nc
Outbuildings : yes



Wood and Fuel



Adsl
Fiber

Advantages : in the quiet | flat terrain

SERVICES



1st Shops : 5 mn



All shops : 20 mn



Health : 30 mn



Kindergarten : 5 mn

Elementary : 10 mn

Middle School : 20 mn

High school : 20 mn



20 mn



30 mn



20 mn



60 mn

ENERGY INFORMATION

Consommation conventionnelle 144,00 kWh/m².an

Estimation des émissions 25,00 kg éqCO₂/m².an



Maisons & Châteaux

12 pl. A. de Solminihac - 46000 CAHORS

Tel +33 (0)5 65 35 63 32

contact@maisonsetchateaux.com

DESCRIPTION

Ground floor: double glazing throughout

Entrance/living room 64m² with chestnut parquet floor, aluminium windows, electric shutters and access to the south/west facing wooden terrace 40m².

Fitted and equipped kitchen of 18m² with double windows and cellar of 4m² containing the 200 litre water heater and the Zaegel Held oil boiler

3,50m² hallway leading to the bedrooms

Shower room 2,20m² with VMC

Washbasin and separate WC 4,20m².

Bedroom1- 11,20m² floor area, attic, window and carpeted floor

Bedroom2- 9,60m², attic, window and carpeted floor

First floor: chestnut parquet flooring and double glazing throughout

L-shaped hallway 22,30m², 1 window

Bedroom3- 20,40m², 2 windows

Bedroom4- attic 15,90m², 2 windows

Bedroom5- attic 15,90m² floor area, 2 windows

Bathroom 7,90m², 1 window and separate WC

Outbuilding 50m², concrete floor with garage and workshop

Swimming pool 4X8 with chlorine, made in 2005 with stone paving

Park of 1 hectare with fruit trees: fig tree, apple tree, pear tree and entrance to the property on a plane tree avenue

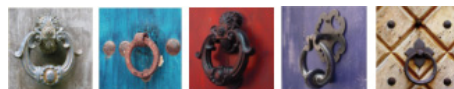
Are you interested ?



Marie

(+33) (0)5 65 35 63 32

contact@maisonsetchateaux.com



Maisons & Chateaux

12 pl. A. de Solminihac - 46000 CAHORS

Tel +33 (0)5 65 35 63 32

contact@maisonsetchateaux.com