



Ref : 9893LRC

Superb contemporary luxury property, panoramic views

Area PESADOIRES



Habitable : 268 m²



Usable : 0 m²



Land : 2 735 m²

574 750 €

Architect's house for sale Lot. House of 268 m²: arranged on 2 levels: 4 bedrooms, study, mezzanine, bathroom, 2 shower rooms, 3 WCs, living room, kitchen, laundry room, garage.

IN SUMMARY

Rooms : 10
Bedrooms : 4
Bathrooms : 3

Swimming pool : no
Garage place : nc
Parking space : nc
Outbuildings : yes



Heat pump

Advantages : High standart property | Panoramic views

SERVICES



1st Shops : 2 mn



All shops : 2 mn



Health : 30 mn



Kindergarten : 2 mn

Elementary : 2 mn

Middle School : 2 mn

High school : 15 mn

ENERGY INFORMATION

Consommation conventionnelle 84,00 kWhép/m².an



Estimation des émissions 2,00 kg éqCO₂/m².an



Maisons & Chateaux

12 pl. A. de Solminihac - 46000 CAHORS

Tel +33 (0)5 65 35 63 32

contact@maisonsetchateaux.com

DESCRIPTION

Garden level: 33 m² garage.

A 35.90 m² workshop.

A 13.15 m² hallway.

A 10.30 m² storeroom.

11.16 m² utility room.

Ground floor:

A 6.35 m² entrance, stone floor.

A 1.50 m² WC with washbasin, stone floor.

A 65 m² lounge with fireplace, stone wall, stone floor.

A 15.20 m² kitchen, central island, base units, double sink, appliances, stone floor, a French-window opening on to a covered terrace with barbecue and SPA for 6.

A 12 m² utility room, washing machine connection, sink, cupboards, tiled floor.

A 35.75 m² garage.

A 5 m² corridor, stone floor.

A 11.70 m² study, built-in cupboards, stone floor.

A 14.94 m² bedroom, stone floor, with ensuite bathroom of 9.80 m², bath, Italian shower, washbasin on cupboard, WC and ensuite dressing room of 6.86 m².

1st floor: access by inside wooden staircase.

A 26.30m² mezzanine-lounge, wooden floor.

A 13.78 m² bedroom, built-in cupboard, wooden floor, then a 2.56 m² shower room, shower, washbasin on cupboard.

A 1.64 m² WC with washbasin, wooden floor.

A 6.81 m² shower room, shower cubicle, washbasin on cupboard, tiled floor. 2 bedrooms of 17.35 m², wooden floor, built-in cupboard.

Underfloor heating by heat pump + reversible air-conditioning - cumulus water heater - double glazing - water softener - septic tank.

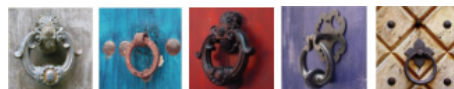
Are you interested ?



Marie

(+33) (0)5 65 35 63 32

contact@maisonsetchateaux.com



Maisons & Chateaux

12 pl. A. de Solminihac - 46000 CAHORS

Tel +33 (0)5 65 35 63 32

contact@maisonsetchateaux.com